

ANCHOR-IT SYSTEM

THE ANCHOR-IT SYSTEM is a wire suspension solution that can suspend applications from a concrete ceiling.

Each Anchor-It support incorporates a one-piece concrete anchor which is vibration resistant and tamperproof. The fixing has an "S" shaped configuration which is pre-formed. The pre-expanded mechanism is activated as the anchor is driven into the drilled hole and creates a spring type compression force against the walls of the hole.

AVAILABILITY

Zip-Clip offer two different Anchor-It suspension systems each allocated a letter to differentiate between the available safe working loads (SWL). Each system comprises of a specific diameter of wire rope and comes with the required Zip-Clip locking device.

- **PLCAKG** system – 15 kg SWL
- **PLCAKS** system – 35 kg SWL

Note: G-system should not be used for HVAC.

Anchor-It is available for drop lengths of 1 m to 10 m. Loads indicated are per individual wire support when coupled with the appropriate Zip-Clip locking device.

Important Note: Overall SWL of the Anchor-It system is governed by the strength of the base material as well as the quality of the fixing into that base material. The Anchor-It system must be de-rated appropriately if either of these factors are applicable.

PROOF LOAD TESTING

- Zip-Clip recommend that Proof Load Testing should be carried out prior to installation in order to confirm system suitability.
- For assistance with Proof Load Testing (UK) contact Zip-Clip Technical Department.

SUITABLE BASE MATERIALS

- Non-cracked concrete.



APPLICATIONS

For lightweight applications:

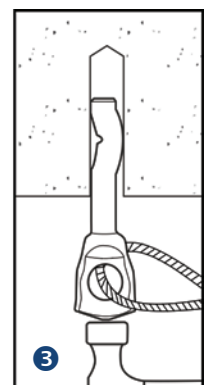
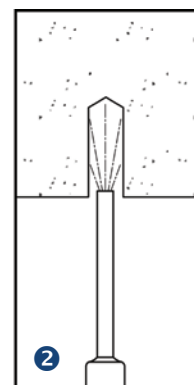
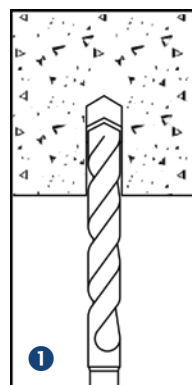
- Electrical trapeze brackets.
- Light fitting suspensions.
- Pre-insulated duct work (rectangular or spiral).
- Signage.
- Acoustic islands and baffles.
- Busbar and trunking track supports.

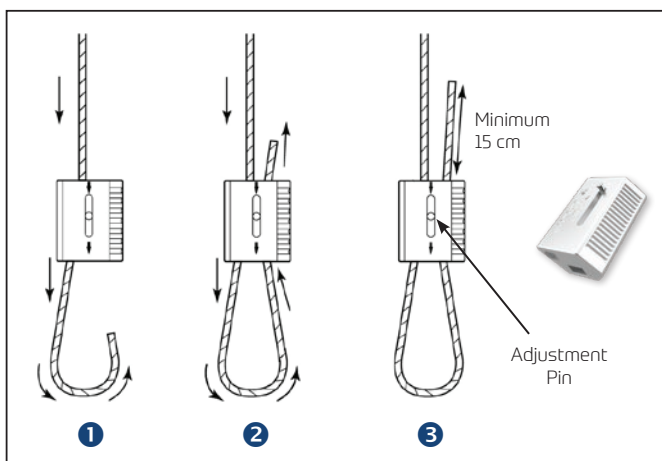
INSTALLATION

- The first step of the process is to install the Anchor-It fixing into the base material.
- The second step is to connect the wire support to the application using the Zip-Clip locking device.

STEP 1:

- 1 Drill 5 mm hole into base material to an embedment depth of 32 mm.
- 2 Remove dust and debris from the hole using a hand pump or compressed air.
- 3 Hammer the anchor into the hole until the head is firmly seated in the base material.





STEP 2:

- ① Pass the wire rope through the Zip-Clip device in the direction of the arrow.
- ② Pass wire rope through or around your required fixture/application and back through the Zip-Clip leaving 15 cm of wire protruding.
- ③ Confirm engagement of the Zip-Clip on the wire by pushing the pin in the **opposite** direction to the arrows indicated.

ADJUSTMENT

Please note: Before any adjustments can be made it is necessary to take all weight off the Zip-Clip device. It will not be possible to make adjustment if this is not done.

To shorten the suspension:

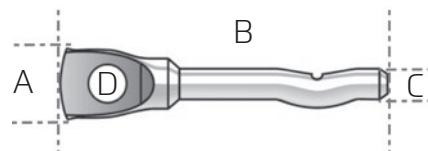
1. Push the Zip-Clip device further up the live (load) wire – This will make the loop bigger.
2. Pull on the dead wire (exit tail) to make the loop smaller – This will shorten the suspension.
3. Trim the dead wire tail to minimum 15 cm or coil the wire neatly to allow for future adjustment.

To lengthen the suspension:

1. Select the channel that holds the dead wire.
2. Make sure there is enough spare dead wire to allow for adjustment whilst maintaining an exit tail.
3. Push the adjustment pin in the direction of the arrow. This will release the dead wire (exit tail).
4. Allow the dead wire to feed back through the Zip-Clip. This will make the loop bigger.
5. Now select the channel that holds the live wire (load).
6. Push the adjustment pin in the direction of the arrow. This will release the live wire.
7. Allow the Zip-Clip to travel down the live wire. This will make the loop smaller.

DIMENSIONS

A – 10.5 mm
B – 47.5 mm
C – 5.0 mm
D – 5.8 mm



MATERIALS

Anchor:

Manufactured from zinc plated 8.2 grade carbon steel.

Zip-Clip Devices:

Zamak zinc alloy main body with internal stainless steel spring and sintered steel locking wedge(s).

Wire Rope:

Galvanised mild steel electro-galvanised wire rope, 1960 N/mm² grade, 7×7 IWRC construction, manufactured to BS EN 12385.

MANUFACTURERS RECOMMENDATIONS

The Zip-Clip Anchor-It system is designed to support **STATIC loads only**. Dynamic and shock loads must be avoided and can greatly increase the overall weight of the product being suspended and therefore compromise the Safe Working Load of the suspension. To ensure integrity and safety of the system only Zip-Clip wire should be used.

- Do not exceed the Safe Working Load (SWL) of the product.
- Do not use locking devices with a coated wire.
- Do not paint or apply any other coating.
- Do not lubricate.
- Do not use for lifting applications.
- Remove any frayed cable prior to inserting into the locking devices.
- Do not shock load.
- Do not use for dynamic loads/installations.
- Do not overload.
- Do not mix Zip-Clip systems with other wire suspension manufacturers products.
- Do not use in corrosive environments, e.g. chlorinated environments.
- 18th Edition Amendment 2 : 2022 compliant.



OFFICIAL IRISH DISTRIBUTOR FOR ZIP-CLIP SOLUTIONS
Tel: +353 1 910 4125 • Email: info@gomac.ie