



THREAD-IT SYSTEM

THE THREAD-IT SYSTEM is a wire suspension solution that gives the ability to connect to a number of different base materials.

Each wire suspension comes complete with a male threaded eye bolt (adapter) which can be coupled with a variety of female threaded connections or fixings to give a mechanical fix. It can also be fixed into items that may contain a through-hole.

AVAILABILITY

Zip-Clip offer three different Thread-It systems each allocated a letter to differentiate between the available safe working loads (SWL). Each systems comprises a specific diameter of wire rope and comes with the required Zip-Clip locking device.

- **PLTRKG** system – 15 kg SWL
- **PLTRKS** system – 50 kg SWL
- **PLTRKY** system – 90 kg SWL

Note: G-system should not be used for HVAC.

Thread-It is available in drop lengths of 1 m to 10 m. Loads indicated are per individual wire support when coupled with the appropriate Zip-Clip locking device.

FEATURES

- 18th Edition Amendment 2 : 2022 compliant.
- Male threaded eye bolts to mechanically fix to anchor points or fixtures.
- Key-free release suspension for height adjustment.
- High tensile galvanised steel wire rope.
- Systems can be inverted upside down.
- Removable.

MATERIALS/COMPONENTS

The Eye Bolts (Adapters):

Standard Thread-it systems come complete with a specific square-head eye bolt (adapter):

- **PLTRKG** system – M6 × 20 mm
- **PLTRKS** system – M6 × 45 mm
- **PLTRKY** system – M8 × 25 mm



	M6 × 20 mm	M6 × 45 mm	M8 × 25 mm
Type	Square-head	Square-head	Square-head
Grade	4.8	4.8	4.8
Material	Steel	Steel	Steel
Finish	BZP	BZP	BZP
Anchor Length	28 mm	54 mm	37 mm
Thread Length	20 mm	45 mm	25 mm

Please Note: Thread-It is supplied with metric eye bolts and should be linked with metric female threads only.

More options are available for eye bolt terminations. These include longer male thread lengths providing greater flexibility for fixing options. These are as follows:

	M6	M8	M10
Type	Round-head, Forged eye	Round-head, Forged eye	Round-head, Forged eye
Grade	5.6	5.6	5.6
Material	Steel	Steel	Steel
Finish	BZP	BZP	BZP
Anchor Length	73 mm	86 mm	108 mm
Thread Length	50 mm	60 mm	73 mm

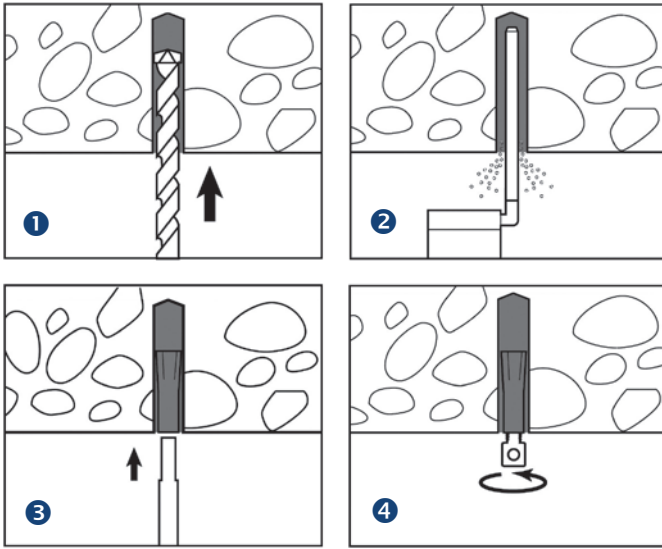
Zip-Clip Devices:

Each Thread-It suspension comes complete with an appropriate Zip-Clip locking device comprising a Zamak zinc alloy main body with internal stainless steel spring and sintered steel locking wedge(s).

Wire Rope:

Galvanised mild steel electro-galvanised wire rope, 1960 N/mm² grade, 7×7 IWRC construction, manufactured to BS EN 12385.

INSTALLATION



INSTALLATION ADVICE

Eye bolt adapters can be coupled to many different types of fixings, therefore:

- Always follow the fixing manufacturer's instructions for installation.
- Always ensure the fixing is compatible with the Thread-It eye bolt adapter.
- Always ensure the base material is adequate for the fixing and the intended load.
- Always ensure that eye bolts are correctly coupled to a service.

FIXING OPTIONS

Thread-It suspensions can be supplied with a variety of different fixings to support suspensions from different base materials. These are as follows:

Concrete:	Couple eye bolt with a drop-in anchor (BS 8539 approved).
Profile Channel:	Couple with the appropriate channel nut/nut/washer/square washer.
Concrete over rib-deck:	Couple with appropriate V-nut/nut/washer or Lindapter fixing/nut/washer.
Into a through hole:	Clamp in place using the appropriate number of nuts and washers.

Invert:

Thread-it suspensions can be inverted so the adapter connects to the service, and the Zip-Clip device anchors the suspension to the ceiling (with the use of the correct fixing).

AREAS FOR USE

The Thread-It range is predominantly for indoor applications. Regular galvanised systems should not be used in areas that have levels of corrosion or elevated levels of heat or moisture.

For applications that are outside or near areas such as the sea, it is recommended to use stainless steel – Zip-Clip can provide Thread-It in a stainless steel version.

For installations that are within corrosive areas and require a stainless steel Thread-It, consult with Zip-Clip Technical Department.

MANUFACTURERS RECOMMENDATIONS

The Zip-Clip Thread-It system is designed to support **STATIC loads only**. Dynamic and shock loads must be avoided and can greatly increase the overall weight of the product being suspended and therefore compromise the safe working load of the suspension. To ensure integrity and safety of the system only Zip-Clip wire should be used.

- Do not couple Thread-It eye bolt adapters with imperial female threaded components.
- Do not exceed the safe working load (SWL) of the product.
- Do not use locking devices with a coated wire.
- Do not paint or apply any other coating.
- Do not lubricate.
- Do not use for lifting applications.
- Remove any frayed cable prior to inserting into the locking devices.
- Do not shock load.
- Do not use for dynamic loads/installations.
- Do not overload.
- Do not mix Zip-Clip systems with other wire suspension manufacturers products.
- Do not use in corrosive environments, e.g. chlorinated environments – For specialist applications, such as corrosive environments, please contact Zip-Clip Technical Department.

