



ZIP-ROD SYSTEM



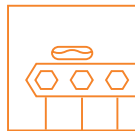
Corrosion resistant non-metallic rods designed to safely support services in corrosive or sensitive environments.



Swimming pool wet areas



Laboratories



Food processing areas



Medical installations



Data centres



PRINCIPLE

Threaded thermoplastic rods are designed to be utilised in the same way that galvanised threaded rod is used; enabling the installer to build bracketry such as trapeze brackets for supporting services.

The range also consists of a number of accessories to form an attachment to a fixing point or fixture.



Rods must not be used to support services heavier than the recommended safe working load (SWL).



FEATURES AND BENEFITS

- Lightweight excellent chemical and corrosion resistance
- High strength
- Hygienic
- Requires “Zero” cleaning and maintenance (pool environments)
- Chemically and biologically inert
- Efficient thermal and electrical insulators
- Non-magnetic for use in MRI and CAT scan environments

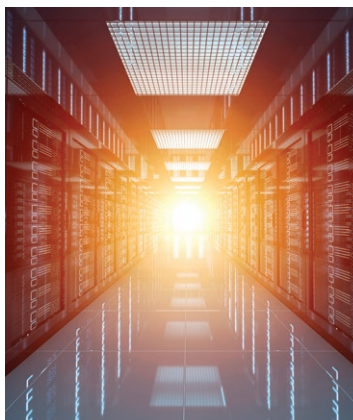
MATERIAL

Zip-Rods are manufactured from high molecular weight thermoplastic polyethylene. This material is chemically and biologically inert; impervious to water, will not crack, will not rot, will not corrode and does not delaminate.



APPLICATIONS

- Cable management
- Duct work systems
- Lighting track and bus bar
- Acoustic baffles and islands
- Signage



INSTALLATION

Zip-Rods should be utilised in the same way that traditional galvanised threaded rod is used, for best results:

- Cut rods to desired length with a hack saw (no need to de-bur).
- Use nut and bolt accessories to form an attachment to a fixing point or fixture.

NOTE:

- Do not use steel nuts or rod with thermoplastic threaded rods.
- Do not over tighten nuts. Tighten by hand and give a half turn with a suitable spanner.

CODE	DESCRIPTION	SWL	PACK QTY
PP10M1	M10 polypropylene threaded support, 1000mm	30 kg	1
PP10M2	M10 polypropylene threaded support, 2000mm	30 kg	1
PP10	M10 hex nut polypropylene	30 kg	10
PP10TC	M10 contour head t nut connector polypropylene	30 kg	10
PP10TF	M10 flat head t nut connector polypropylene	30 kg	10
PP10W	M10 washer polypropylene	30 kg	10

